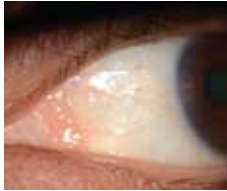




# Pictures needed for an Iridology Reading



**1** Left Iris



**2** Left Nasal Sclera



**3** Left Temporal Sclera

## Take 3 pictures of your **LEFT** eye:

- 1 Looking straight open wide or use finger to open.
- 2 Looking towards your left ear, using your fingers to open your eye as much as possible.
- 3 Looking towards your nose, using your fingers to open your eye as much as possible so I can see the sclera (white part).



**1** Right Iris



**2** Right Nasal Sclera



**3** Right Temporal Sclera

## Take 3 pictures of your **RIGHT** eye:

- 1 Looking straight open wide or use finger to open.
- 2 Looking towards your right ear, using your fingers to open your eye as much as possible.
- 3 Looking towards your nose, using your fingers to open your eye as much as possible so I can see the sclera (white part).

## TIPS

If you have dark eyes, you may need to use your camera flash or a flashlight and shine it from the side into your eye. You may have to try many times to get a good, in focus photo, it's Ok, keep trying. You want to get the iris in focus and the entire iris (colored part) in the picture without your lids covering it.